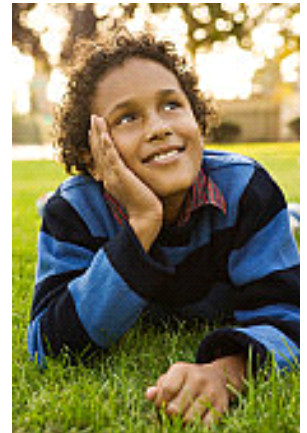


# Do you know a youth who needs a mentor?

**Refer DCFS/Probation Youth  
(living in group homes, foster homes, relative care)  
to our School Based  
Academic Mentoring Programs**



## Current Schools

- |                 |                         |
|-----------------|-------------------------|
| • Bethune MS    | • Fremont HS            |
| • Drew MS       | • Jordan HS             |
| • Foshay LC     | • Washington<br>Prep HS |
| • Gompers MS    | • Barrett ES            |
| • Muir MS       | • Virgil MS             |
| • Markham<br>MS |                         |



Children Uniting Nations



### More about the Program:

- **Mentors: Screened and Trained**
- **On School site: 1-3 hrs per week**
  - **Workshops & Trainings:  
Students, Caregivers & Teachers**
  - **Community/Cultural Field Trips  
and Special Events**

To make a referral or for more information contact:

**Adrienne Popeney MSW/PPSC**

(323) 944-0500 or

[apopeney@childrenunitingnations.org](mailto:apopeney@childrenunitingnations.org)

Or Fax referral form to: 323-944-0800

[www.ChildrenUnitingNations.org](http://www.ChildrenUnitingNations.org)

*Completing a referral form does not guarantee  
acceptance into the program*

